

# Cynomolgus CTLA4 Protein; His Tag

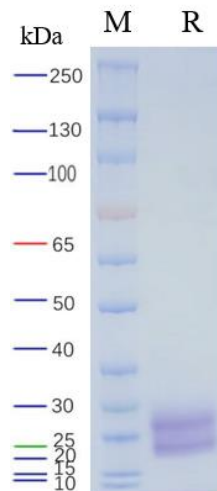
## Product Information

<b>Product Name</b>	Cynomolgus CTLA4 Protein; His Tag
<b>Storage temp.</b>	Store at $\leq -70^{\circ}\text{C}$ , stable for 6 months after receipt. Recommend to aliquot the protein into smaller quantities for optimal storage. Please minimize freeze-thaw cycles.
<b>Catalog# / Size</b>	<b>GM-87555RP-100 / 100 <math>\mu\text{g}</math></b> <b>GM-87555RP-1000 / 1 mg</b>

## Protein Information

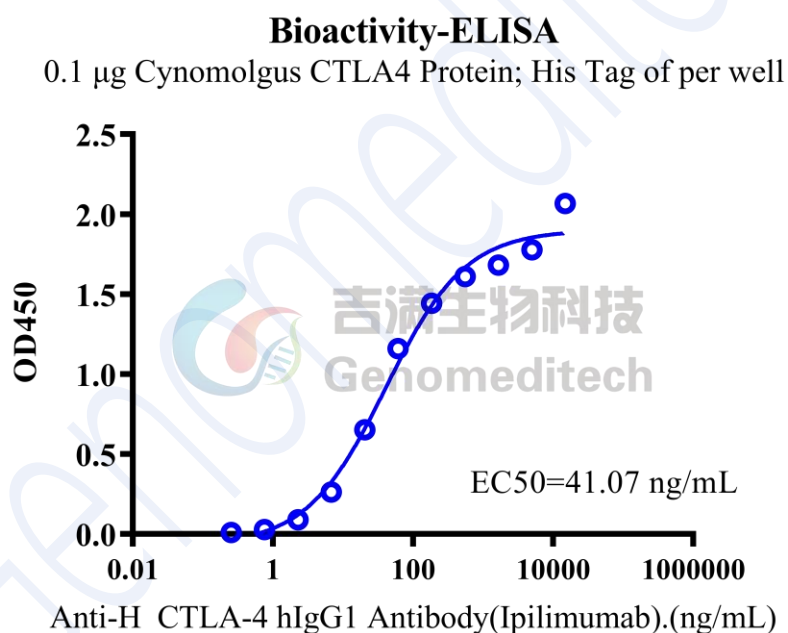
<b>Alternative Names</b>	CTLA-4,CD152
<b>Source</b>	Cynomolgus CTLA4 Protein; His Tag (GM-87555RP) is expressed from human 293 cells (HEK-293). It contains AA Ala 37 - Ser 160 (Accession # G7PL88-1). This protein carries a His tag at the C-terminus.
<b>Purity</b>	> 95% as determined by SDS-PAGE
<b>Endotoxin</b>	< 1 EU/ $\mu\text{g}$ , determined by LAL gel clotting assay
<b>Predicted Mol Mass</b>	14.4 KDa
<b>Formulation</b>	Supplied as a 0.2 $\mu\text{m}$ filtered solution of PBS, pH7.4.
<b>Description</b>	<p>CTLA-4 (Cytotoxic T-lymphocyte-associated protein 4) is a protein receptor that plays a crucial role as an immune checkpoint in regulating immune responses. It is expressed on the surface of T cells and helps regulate the immune system to prevent it from attacking healthy cells. CTLA-4 is essential for maintaining immune homeostasis and preventing autoimmune diseases.</p> <p>CTLA-4 inhibits T cell activation by competitively binding to B7 molecules (CD80 and CD86). It is rapidly expressed in the early stages of T cell activation and inhibits T cell activation and proliferation by suppressing co-stimulatory signals. This inhibitory function helps to prevent excessive immune responses and the development of autoimmune diseases.</p> <p>CTLA-4 is of significant importance in immunotherapy as inhibiting CTLA-4 can enhance immune responses and improve anti-tumor immune responses. Anti-CTLA-4 antibodies have been used in the treatment of various tumors such as melanoma. A deep understanding of the CTLA-4 protein and its function aids in the development of new immunotherapy strategies to enhance treatment outcomes for diseases like cancer.</p>

## SDS-PAGE



On SDS-PAGE under reducing (R) condition. The gel was stained overnight with Coomassie Blue. The purity of the protein is greater than 95%.

## Bioactivity-ELISA



Cynomolgus CTLA4 Protein; His Tag (Catalog # GM-87555RP) was immobilized at 1  $\mu$ g/ml (100  $\mu$ L/well). Increasing concentrations of Anti-H\_CTLA-4 hIgG1 Antibody (Ipilimumab) (Catalog # GM-27203AB) were added.